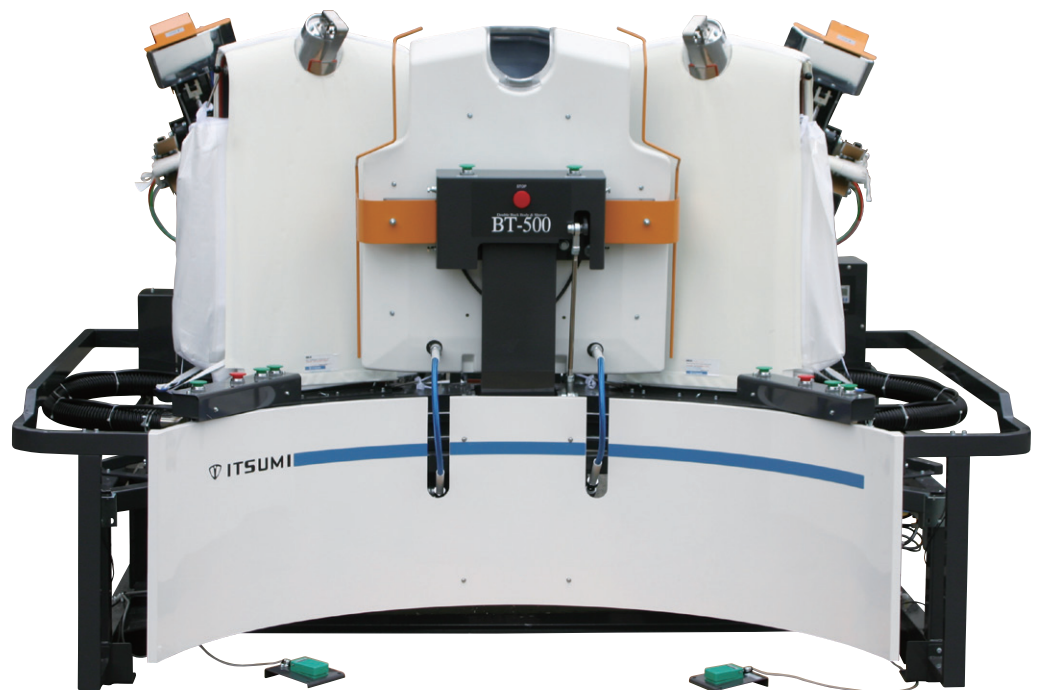


BT-500-E

Double Body Press

Innovation of finishing a shirt deriving from advanced layout



Based on the idea about “Using 2 units of the Single Body per person”

- Achieved a doubled productivity together with keeping the same level quality as BT-100-J (Single).
- Inherited reliability together with sharing a number of parts.
- It is possible to re-arrange the system flexibly from for one to three person according to throughput.

Unique dummy mover and layout

- Surprising effect deriving from the world’s first dummy moving system and the press layout (under a patent application).
- Contributing to high productivity owing to a short time moving deriving from a short moving distance.
- Lowered an operator’s burden deriving from reduced operator’s moving distance compared with the Single Type.

Excellent cost performance

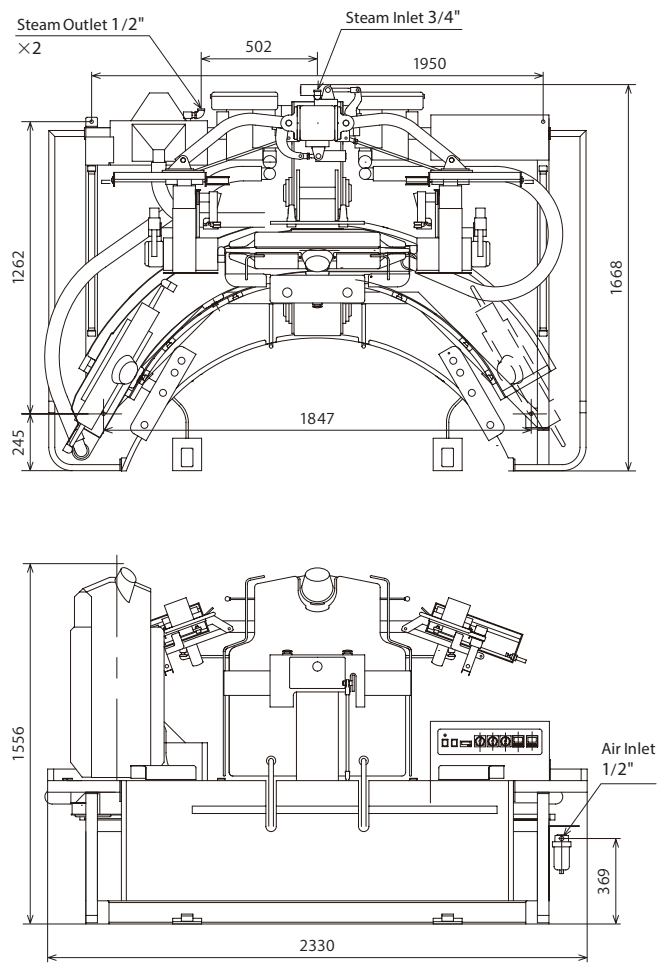
- Ensured cost performance (energy saving and operation time reduction) deriving from a single set of pressing iron for a body and a sleeve.
- Total space including one for operation is space saving, almost the same as the Single Type.
- It is easy to replace a pad, a cover and an airbag by anyone in a short time.

MAJOR SPECIFICATION

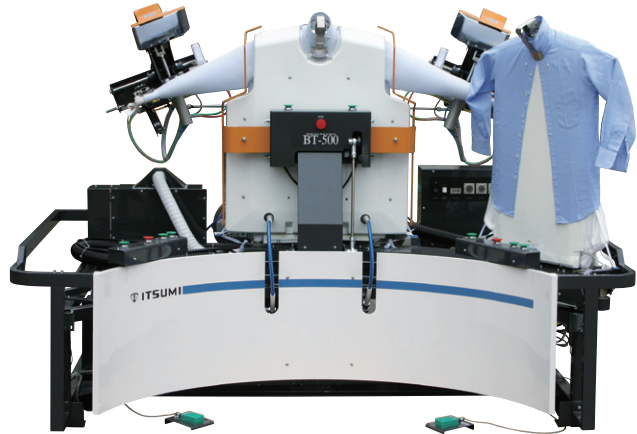
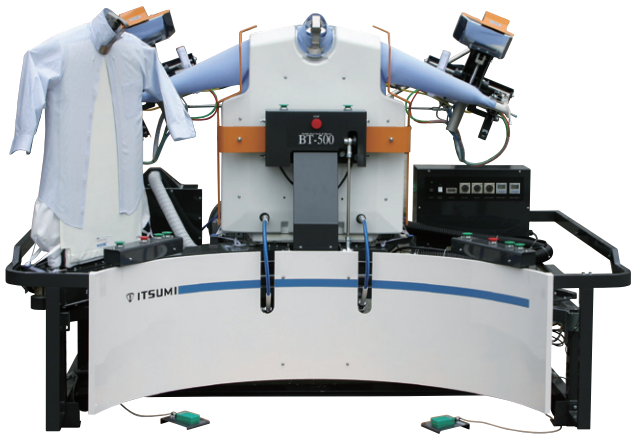
Integrated Technology for the Machine

Model		BT-500-E
Product name		Double Body Press
Power supply	Voltage	3 phase AC400V
	Hz	50 Hz
	Power consumption	3.3 Kw
Fan motor		0.75 Kw
Vacuum motor		0.85 Kw × 3
Steam	Standard use pressure	0.5 MPa
	Max. supply pressure	0.7 MPa
	Inlet	20 A
	Outlet	15 A
Air	Standard use pressure	0.5 MPa
	Max. supply pressure	0.9 MPa
	Consumption	45 L / time
Dimension	Width	2330 mm
	Depth	1668 mm
	Height	1556 mm
Exhaust diameter		1 1/2 inch
Weight		900 kg

*Specification set forth on this catalogue is subject to change without prior notice.



© BT-500-E Motion



1. Put a shirt on the outside dummy (as an example, here it is put on the left side).
* It is easy to do this, as each dummy has a vacuum motor and a collar clamp respectively.
2. When pushing the button to move the dummy, the dummy moves and a body is pressed.
* Prior pressing onto a body makes a finishing of thick part of a shoulder and a flank noticeable.
3. An operator handles the left sleeve first by his slight moving and then handles the right side.
4. When pushing the press button, automatically controlled sleeve finishing process begins.
5. The operator can face the right side dummy by moving by additional half a step.
* Burden reduction and productivity improvement derive from an efficient allocation of an operation module centered on an operator.



ITSUMI SEISAKUSHO CO., LTD.

3670 KASAHATA KAWAGOE CITY SAITAMA 350-1175 JAPAN TEL: +81-49-231-1799 FAX: +81-49-231-9079
e-mail: info@itsumi.co.jp <http://www.itsumi.co.jp>