

BT-70 - E

Single Buck Body Press / SAVER

Let' review a shirt press machine!
A high quality finishing obtainable more easily.



“Saves” running cost

- Saved energy consumption deriving from a compact size cylinder (compared with our previous model).
- Achieved a compact design in spite of inheriting a high quality.
- It is possible to save a capital investment cost with an affordable price range.

“Saves” time by means of a finishing quality

- Reduced a finishing process time by speeding up a dummy moving etc.
- Achieved a high quality finishing by means of the press system featuring a reputed human body shape and a high temperature airbag attached to an upper model.
- Raised substantial productivity by curbing a retry by means of additional introduction of a rearview mirror and a timing adjustor.

“Saves” maintenance cost

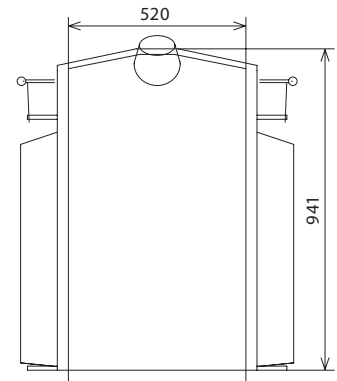
- Reduced a failure rate of a pneumatic equipment by adding a drain filter.
- It is possible for anyone to replace a pad, a cover and an airbag easily in a short time.
- Achieved a long life by means of a fusion of a simple tidy design and a robust structure.

MAJOR SPECIFICATION

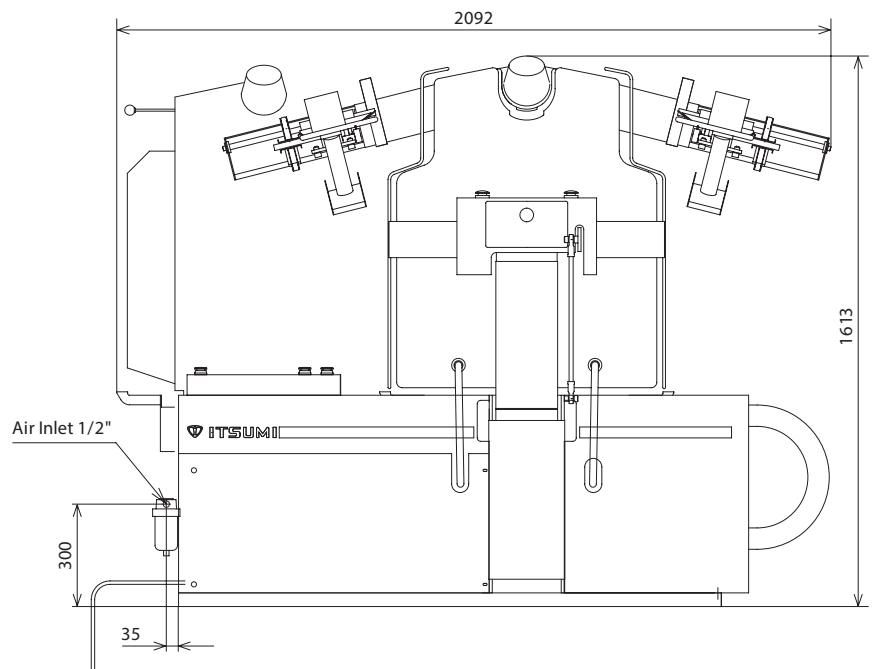
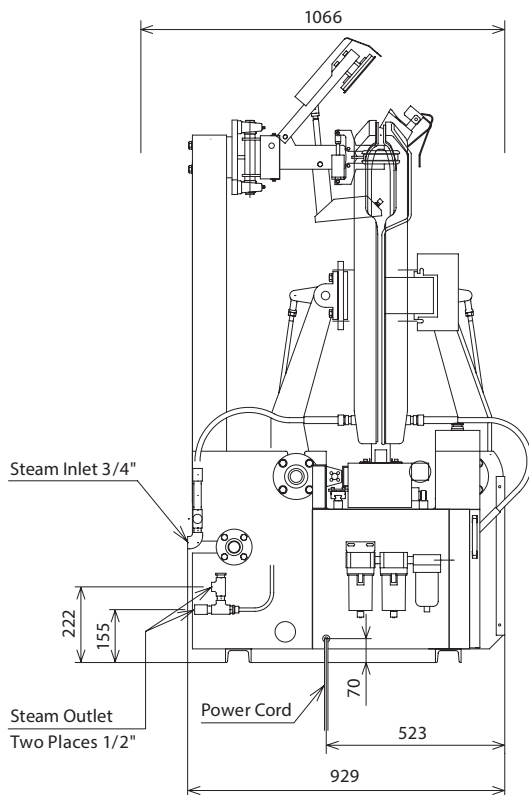
Integrated Technology for the Machine

Model	BT-70-E	
Product name	Single Buck Body Press / Saver	
Power supply	3 phase AC400V 50Hz	
Power consumption	1.6 Kw	
Vacuum motor	0.85 Kw	
Heated air	0.75 Kw	
Steam	Standard use pressure	0.5 MPa
	Max. supply pressure	0.7 MPa
	Consumption	40 kg / h
	Inlet	3/4 inch
	Outlet	1/2 inch
Air	Consumption	39.8 liter
	Standard use pressure	0.5 MPa
	Max. supply pressure	0.9 MPa
	Inlet	1/2 inch
Mechanical dimension	Width×Depth×Height	2092×1066×1613 mm
Exhaust diameter	1 1/2 inch	
Weight	620 kg	

Buck Dimension



*Specification set forth on this catalogue is subject to change without prior notice.



ITSUMI SEISAKUSHO CO., LTD.

3670 KASAHATA KAWAGOE CITY SAITAMA 350-1175 JAPAN TEL: +81-49-231-1799 FAX: +81-49-231-9079

e-mail: info@itsumi.co.jp <http://www.itsumi.co.jp>